

Need a Mortgage in principle
to make offers? Call us now
for quick assistance!
0121 775 0101



Do you need to sell?
Start your journey now!
Call us we can help.
01564 777 314



SCAN FOR MORE INFO
SIZE - 635 Sq Ft
TENURE - Freehold
COUNCIL TAX - Solihull Metropolitan Borough Council - B
BROADBAND - Upload Max 220Mbps
Download Max 1800Mbps
MOBILE - EE - 82%, O2 - 74%, 3 - 76%, Vodafone - 78%
EPC - F - 24
PARKING - Off Road
FLOODRISK - Very Low
SERVICES - Mains
COVENANTS - N/A

Are you an investor
interested in expanding your
portfolio?

**Call 01564 777 314 to provide your
investment criteria for alerts.**

Chadwick Cottage

Warwick Road, Chadwick End, B93 0BL

Nestled in the charming village of Chadwick End, this beautifully presented end terraced cottage offers a delightful blend of character and modern living. This charming property is a perfect opportunity for those seeking a delightful home in a picturesque village setting.

FEATURES

- End Terraced Character Cottage
- Lounge with Wood Burning Stove
- Breakfast Kitchen with Under Floor Heating
- Spacious Ground Floor Bathroom
- Two Good Sized Double Bedrooms
- Private Rear Garden
- Off Road Parking
- Village Location
- Short Drive to Knowle
- Easily Accessible to the M42



SCAN TO **VIEW OUR**
WEEKLY FILMS &
SUBSCRIBE

Sneak Peeks

Every week, we unveil "Sneak Peeks," a feature showcasing exclusive properties before they hit Rightmove and other platforms.

The Landlord Club

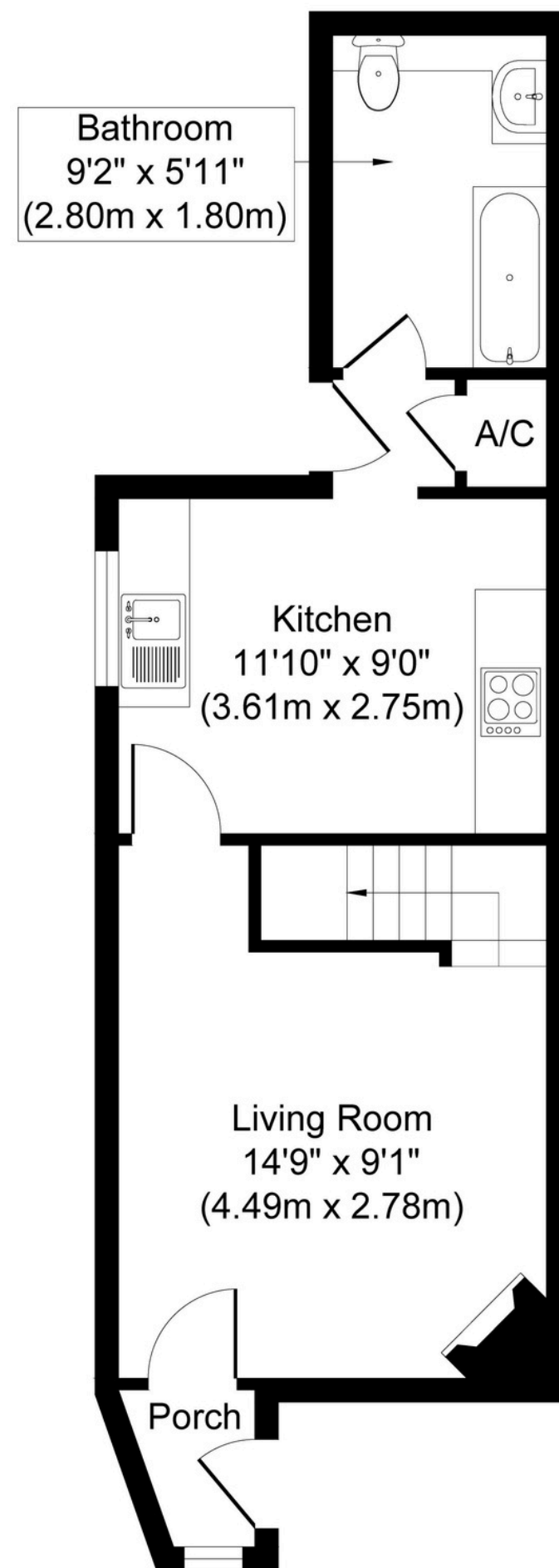
Join our Landlord Club for weekly updates on legislation, market trends, and our Letting Director's 'Investment Pick of the Week' for optimal ROI.

HTSPMD

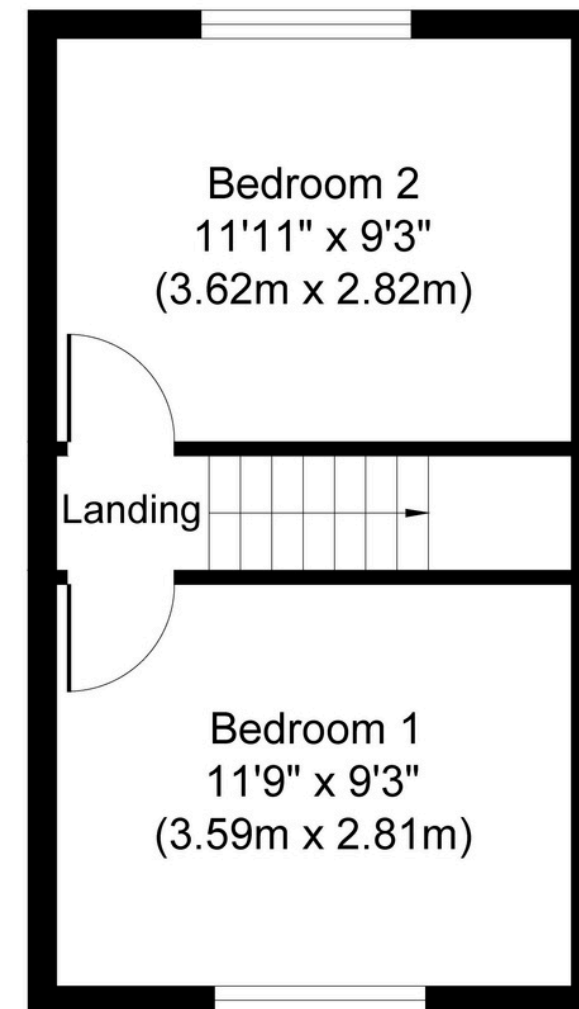
Tune into 'How's The Solihull Property Market Dom' weekly for a quick, insightful snapshot of the market.

The Mortgage Update

Get weekly insights and the best deals with our Mortgage Update, your shortcut to navigating the complex mortgage landscape confidently.



Ground Floor
Approximate Floor Area
377 sq. ft
(35.06 sq. m)



First Floor
Approximate Floor Area
258 sq. ft
(23.93 sq. m)